

Name: \_\_\_\_\_

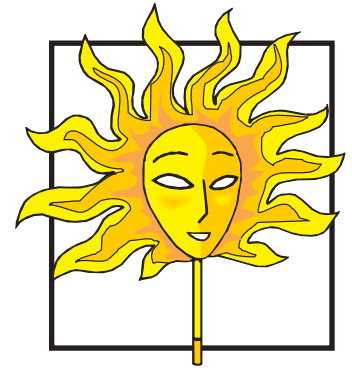
Teacher: \_\_\_\_\_

Class: \_\_\_\_\_

## Mardi Gras Word Search

*What is gray, has a trunk and weighs about 5 pounds?*

Find the hidden words.



A	f	n	y	f	n	z	p	a	r	a	d	e	s	n	y	z	b	p
B	z	a	z	t	l	e	d	m	a	r	t	b	f	s	h	r	q	a
C	y	g	t	f	f	o	w	b	s	o	k	y	a	x	h	w	a	z
D	c	p	o	t	i	a	a	o	m	b	e	r	o	d	y	g	p	k
E	c	v	y	l	u	j	t	t	r	a	j	e	e	b	e	a	d	s
F	m	o	r	f	d	e	e	m	s	l	r	i	m	w	n	g	w	u
G	a	k	s	t	f	l	s	e	o	l	e	d	m	a	e	e	i	z
H	s	i	j	t	p	k	k	d	s	n	a	a	i	v	j	s	d	k
I	k	n	x	r	u	a	z	c	a	h	d	s	n	g	b	p	f	u
J	e	g	u	q	c	m	i	g	q	y	i	a	d	s	r	a	m	v
K	l	p	y	g	u	n	e	o	r	u	r	v	y	n	l	a	m	f
L	s	t	n	s	c	e	i	s	o	e	r	a	y	y	m	k	s	o
M	i	i	h	i	o	w	e	l	i	m	e	r	r	y	s	h	v	l
N	k	i	p	m	v	d	f	n	i	o	k	n	c	x	u	f	d	o
	1	2	3	4	5	6	7	8	9	10	11	12	13	14	15	16	17	18

art	Fat Tuesday	King Cakes	New Orleans
ball	floats	Krewes	parades
beads	gold	Louisiana	picnics
costumes	green	Mardi Gras	purple
FatMonday	king	mask	queen

# Answer Key

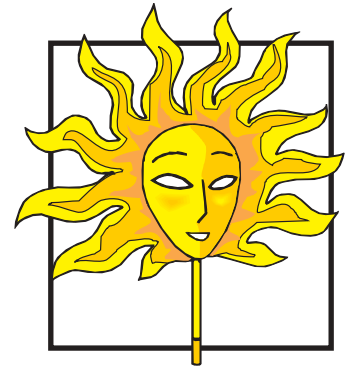
Teacher: \_\_\_\_\_

Class: \_\_\_\_\_

## Mardi Gras Word Search

What is gray, has a trunk and weighs about 5 pounds? A mouse going on holiday.

Find the hidden words.



A	f	n	y	f	n	z	p	a	r	a	d	e	s	n	y	z	b	p
B	z	a	z	t	l	e	d	m	a	r	t	b	f	s	h	r	q	a
C	y	g	t	f	f	o	w	b	s	o	k	y	a	x	h	w	a	z
D	c	p	o	t	i	a	a	o	m	b	e	r	o	d	y	g	p	k
E	c	v	y	l	u	j	t	t	r	a	j	e	e	b	e	a	d	s
F	m	o	r	f	d	e	e	m	s	l	r	i	m	w	n	g	w	u
G	a	k	s	t	f	l	s	e	o	l	e	d	m	a	e	e	i	z
H	s	i	j	t	p	k	k	d	s	n	a	a	i	v	j	s	d	k
I	k	n	x	r	u	a	z	c	a	h	d	s	n	g	b	p	f	u
J	e	g	u	q	e	m	i	g	q	y	i	a	d	s	r	a	m	v
K	l	p	y	g	u	n	e	o	r	u	r	v	y	n	l	a	m	f
L	s	t	n	s	c	e	i	s	o	e	r	a	y	y	m	k	s	o
M	i	i	h	i	o	w	e	l	i	m	e	r	r	y	s	h	v	l
N	k	i	p	m	v	d	f	n	i	o	k	n	c	x	u	f	d	o
	1	2	3	4	5	6	7	8	9	10	11	12	13	14	15	16	17	18

- |            |             |            |             |
|------------|-------------|------------|-------------|
| art        | Fat Tuesday | King Cakes | New Orleans |
| ball       | floats      | Krewes     | parades     |
| beads      | gold        | Louisiana  | picnics     |
| costumes   | green       | Mardi Gras | purple      |
| Fat Monday | king        | mask       | queen       |